

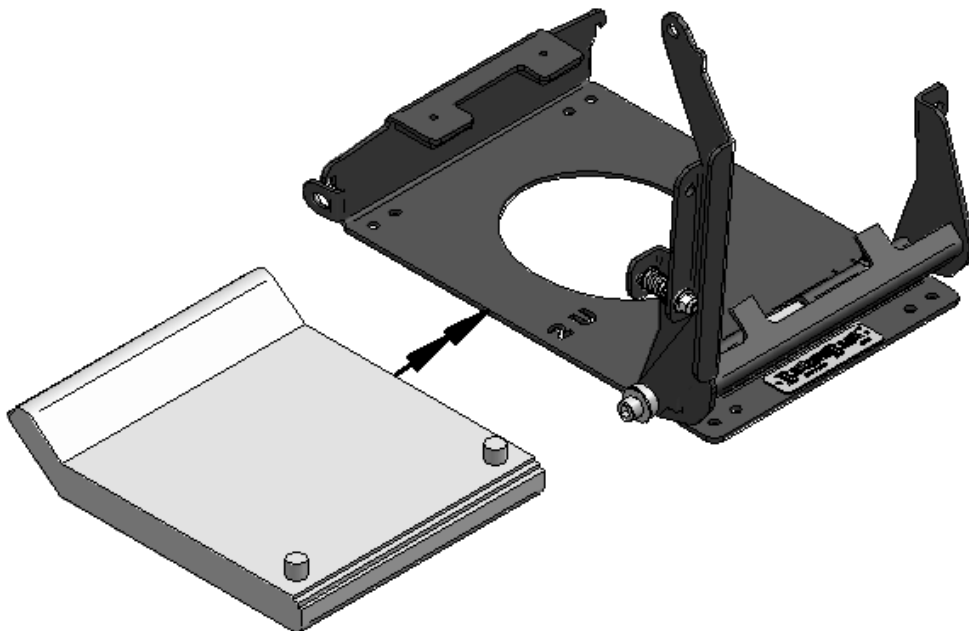
RAMMER RACK™

Installation of the RammerRack

(Do not bolt RammerRack to plastic bed liner)

Before installing RammerRack type 2U, check details on back of this sheet to determine any adjustments required for your rammer type. .

1. Find an area on the truck bed or metal mounting surface that is free of electrical wiring, gas tank, gas lines, and main frame on the top surface and underneath
2. Using the RammerRack as a template, position it on the surface in the desired spot. Mark 4 of the 8 holes making sure one hole on each corner of the rack is used.
3. Remove rack and drill the pre-marked holes completely through the bed or surface.
4. Position the rack back on the drilled surface and line it up with the holes.
5. Slide the bolts through RammerRack and drilled holes, securely screwing each of the 4 bolts to the 4 metal brackets that have captured nuts and tighten securely in place.
6. During transportation, rammer must be secured with a pad lock.
7. To properly place your rammer into the RammerRack unit, open the locking bar fully and set rammer next to the unit with the shoe oriented as shown, then slide the rammer into place. You can damage your RammerRack if you attempt any other orientation. (Your actual shoe may vary)



Detail A below shows the bolt and bracket for securing the RammerRack to the bed or other surface. As shipped, your RammerRack type 2U is set up for these units:

Multiquip
Wacker-Neuson BS60

Atlas Copco
Chicago Pneumatic

APT series

DETAIL B below, shows the Black HDPE Spacer(s) that may need to be added or removed based on your rammer unit:

Large Black HDPE Spacer

Multiquip
Wacker-Neuson BS60 series
Atlas Copco
Chicago Pneumatic
APT

Small Black HDPE Spacer

Allen Eng "ATC" series
Bobcat
Ingersoll-Rand BR models
Toro VR series

Combined Black HDPE Spacers

Wacker-Neuson BS50-4

No Spacer

Bomag
Weber

DETAIL C below, shows the position of the brass washers as shipped. If you are using the rack with other brands, relocate the brass washer from the top of the tensioning spring (just below the clamp arm) to below the Nylok nut (just above the clamp arm). This will permit the system to apply appropriate tension to the top of the thicker shoe. Start by moving 2-3 brass washers and adjust as needed to apply maximum spring compression without fully compressing the spring when latching the clamp arm. This will also store the brass washers for future adjustment or equipment change. If you require assistance, call Tim Eyler at 503-867-5137.

Questions about which
RammerRack fits your unit?
See Fit Guide at
www.rammerrack.com

